

Sets are bulk shipped

**Order SHIMS by individual piece or set**

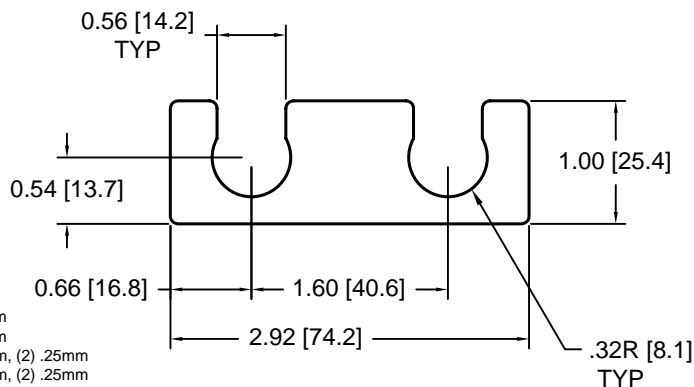
Drawings are not to scale

*Metric shims over 0.25mm thick are black oxidized*

*Slots and holes are centered unless otherwise noted*

**DSCH013 Series - Individual Shims**

DSC Part No.	Description	Thickness	Other part numbers
DSCH013-M025	Metric thickness shim	.25mm	FSD 34504-54
DSCH013-M050	Metric thickness shim	.50mm	FSD 34504-53
DSCH013-M100	Metric thickness shim	1.00mm	FSD 34504-52
DSCH013-M200	Metric thickness shim	2.00mm	FSD 34504-51
DSCH013-E015	Inch thickness shim	.015 inch	FSD 14053-54
DSCH013-E032	Inch thickness shim	.031 Inch	FSD 14053-52
DSCH013-E062	Inch thickness shim	.062 inch	FSD 14053-51

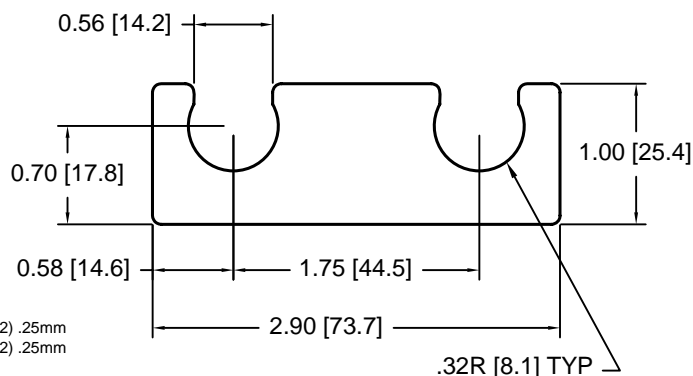


**DSCH013 Series - Shim Sets**

DSC Part No.	Description	Thickness	Set includes
DSCH013-M454	Four piece metric shim set	4.50mm	(1) 2.00mm, (2) 1.00mm, (1) .50mm
DSCH013-M505	Five piece metric shim set	5.00mm	(1) 2.00mm, (2) 1.00mm, (2) .50mm
DSCH013-M506	Six piece metric shim set	5.00mm	(1) 2.00mm, (2) 1.00mm, (1) .50mm, (2) .25mm
DSCH013-M507	Seven piece metric shim set	5.00mm	(1) 2.00mm, (1) 1.00mm, (3) .50mm, (2) .25mm
DSCH013-M605	Five piece metric shim set	6.00mm	(2) 2.00mm, (1) 1.00mm, (2) .50mm
DSCH013-E255	Five piece inch shim set	.250 inch	(3) .062 inch, (2) .031 Inch

**DSCH014 Series - Individual Shims**

DSC Part No.	Description	Thickness	Other part numbers
DSCH014-M025	Metric thickness shim	.25mm	FSD 34505-54
DSCH014-M050	Metric thickness shim	.50mm	FSD 34505-53
DSCH014-M100	Metric thickness shim	1.00mm	FSD 34505-52
DSCH014-M200	Metric thickness shim	2.00mm	FSD 34505-51
DSCH014-E015	Inch thickness shim	.015 inch	FSD 14068-54
DSCH014-E032	Inch thickness shim	.031 Inch	FSD 14068-52
DSCH014-E062	Inch thickness shim	.062 inch	FSD 14068-51

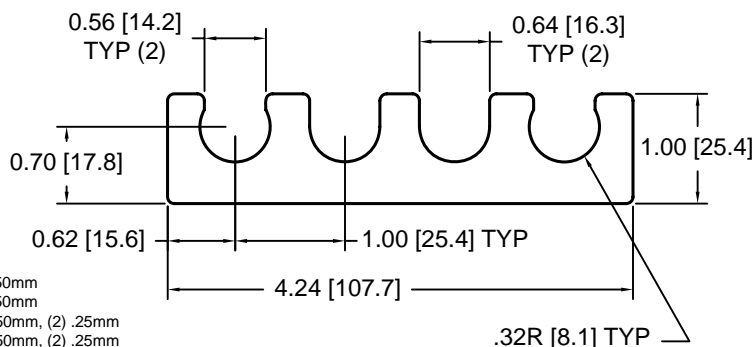


**DSCH014 Series - Shim Sets**

DSC Part No.	Description	Thickness	Set includes
DSCH014-M454	Four piece metric shim set	4.50mm	(1) 2.00mm, (2) 1.00mm, (1) .50mm
DSCH014-M505	Five piece metric shim set	5.00mm	(1) 2.00mm, (2) 1.00mm, (2) .50mm
DSCH014-M506	Six piece metric shim set	5.00mm	(1) 2.00mm, (2) 1.00mm, (1) .50mm, (2) .25mm
DSCH014-M507	Seven piece metric shim set	5.00mm	(1) 2.00mm, (1) 1.00mm, (3) .50mm, (2) .25mm
DSCH014-M605	Five piece metric shim set	6.00mm	(2) 2.00mm, (1) 1.00mm, (2) .50mm
DSCH014-E255	Five piece inch shim set	.250 inch	(3) .062 inch, (2) .031 Inch

**DSCH015 Series - Individual Shims**

DSC Part No.	Description	Thickness	Other part numbers
DSCH015-M025	Metric thickness shim	.25mm	FSD 34506-54
DSCH015-M050	Metric thickness shim	.50mm	FSD 34506-53
DSCH015-M100	Metric thickness shim	1.00mm	FSD 34506-52
DSCH015-M200	Metric thickness shim	2.00mm	FSD 34506-51
DSCH015-E015	Inch thickness shim	.015 inch	FSD 14202-54
DSCH015-E032	Inch thickness shim	.031 Inch	FSD 14202-52
DSCH015-E062	Inch thickness shim	.062 inch	FSD 14202-51

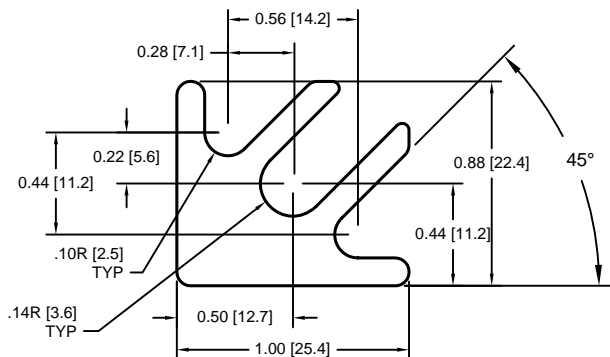


**DSCH015 Series - Shim Sets**

DSC Part No.	Description	Thickness	Set includes
DSCH015-M454	Four piece metric shim set	4.50mm	(1) 2.00mm, (2) 1.00mm, (1) .50mm
DSCH015-M505	Five piece metric shim set	5.00mm	(1) 2.00mm, (2) 1.00mm, (2) .50mm
DSCH015-M506	Six piece metric shim set	5.00mm	(1) 2.00mm, (2) 1.00mm, (1) .50mm, (2) .25mm
DSCH015-M507	Seven piece metric shim set	5.00mm	(1) 2.00mm, (1) 1.00mm, (3) .50mm, (2) .25mm
DSCH015-M605	Five piece metric shim set	6.00mm	(2) 2.00mm, (1) 1.00mm, (2) .50mm
DSCH015-E255	Five piece inch shim set	.250 inch	(3) .062 inch, (2) .031 Inch

**DSCH016 Series - Individual Shims**

DSC Part No.	Description	Thickness	Other part numbers
DSCH016-M025	Metric thickness shim	.25mm	FSD 34507-54
DSCH016-M050	Metric thickness shim	.50mm	FSD 34507-53
DSCH016-M100	Metric thickness shim	1.00mm	FSD 34507-52
DSCH016-M200	Metric thickness shim	2.00mm	FSD 34507-51
DSCH016-E015	Inch thickness shim	.015 inch	FSD 14190-54
DSCH016-E032	Inch thickness shim	.031 Inch	FSD 14190-52
DSCH016-E062	Inch thickness shim	.062 inch	FSD 14190-51



**DSCH016 Series - Shim Sets**

DSC Part No.	Description	Thickness	Set includes
DSCH016-M454	Four piece metric shim set	4.50mm	(1) 2.00mm, (2) 1.00mm, (1) .50mm
DSCH016-M505	Five piece metric shim set	5.00mm	(1) 2.00mm, (2) 1.00mm, (2) .50mm
DSCH016-M506	Six piece metric shim set	5.00mm	(1) 2.00mm, (2) 1.00mm, (1) .50mm, (2) .25mm
DSCH016-M507	Seven piece metric shim set	5.00mm	(1) 2.00mm, (1) 1.00mm, (3) .50mm, (2) .25mm
DSCH016-M605	Five piece metric shim set	6.00mm	(2) 2.00mm, (1) 1.00mm, (2) .50mm
DSCH016-E255	Five piece inch shim set	.250 inch	(3) .062 inch, (2) .031 Inch

Douglas Stamping Company (248) 542-3940 FAX (248) 542-6342

<http://dougstampco.com> [sales@dougstampco.com](mailto:sales@dougstampco.com)