

Sets are bulk shipped

Order SHIMS by individual piece or set

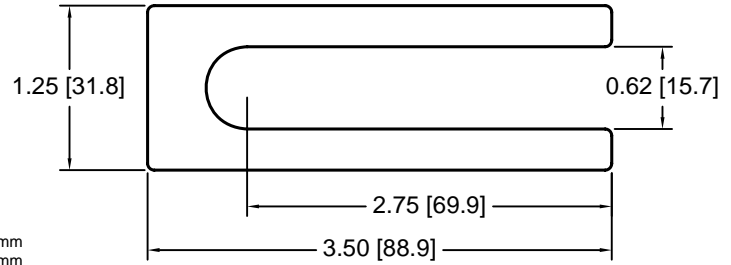
Drawings are not to scale

Metric shims over 0.25mm thick are black oxidized

Slots and holes are centered unless otherwise noted

**DSCH021 Series - Individual Shims**

DSC Part No.	Description	Thickness	Other part numbers
DSCH021-M025	Metric thickness shim	.25mm	FSD 39558-54
DSCH021-M050	Metric thickness shim	.50mm	FSD 39558-53
DSCH021-M100	Metric thickness shim	1.00mm	FSD 39558-52
DSCH021-M200	Metric thickness shim	2.00mm	FSD 39558-51
DSCH021-E015	Inch thickness shim	.015 inch	FSD 39600-54
DSCH021-E032	Inch thickness shim	.031 Inch	FSD 39600-52
DSCH021-E062	Inch thickness shim	.062 inch	FSD 39600-51

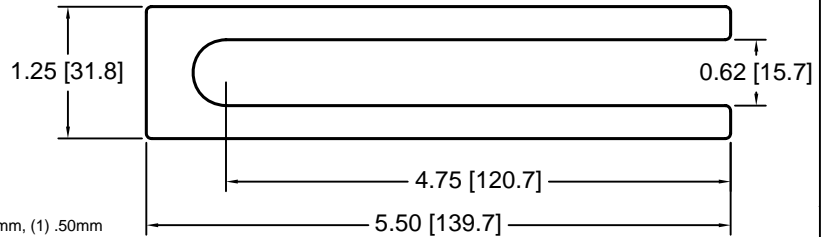


**DSCH021 Series - Shim Sets**

DSC Part No.	Description	Thickness	Set includes
DSCH021-M454	Four piece metric shim set	4.50mm	(1) 2.00mm, (2) 1.00mm, (1) .50mm
DSCH021-M505	Five piece metric shim set	5.00mm	(1) 2.00mm, (2) 1.00mm, (2) .50mm
DSCH021-M506	Six piece metric shim set	5.00mm	(1) 2.00mm, (2) 1.00mm, (1) .50mm, (2) .25mm
DSCH021-M507	Seven piece metric shim set	5.00mm	(1) 2.00mm, (1) 1.00mm, (3) .50mm, (2) .25mm
DSCH021-M605	Five piece metric shim set	6.00mm	(2) 2.00mm, (1) 1.00mm, (2) .50mm
DSCH021-E255	Five piece inch shim set	.250 inch	(3) .062 inch, (2) .031 Inch

**DSCH022 Series - Individual Shims**

DSC Part No.	Description	Thickness	Other part numbers
DSCH022-M025	Metric thickness shim	.25mm	FSD 39559-54
DSCH022-M050	Metric thickness shim	.50mm	FSD 39559-53
DSCH022-M100	Metric thickness shim	1.00mm	FSD 39559-52
DSCH022-M200	Metric thickness shim	2.00mm	FSD 39559-51
DSCH022-E015	Inch thickness shim	.015 inch	FSD 39601-54
DSCH022-E032	Inch thickness shim	.031 Inch	FSD 39601-52
DSCH022-E062	Inch thickness shim	.062 inch	FSD 39601-51

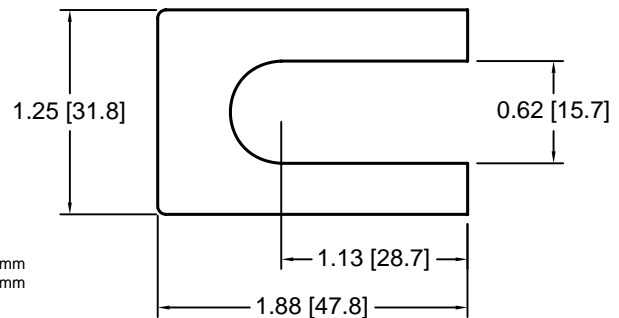


**DSCH022 Series - Shim Sets**

DSC Part No.	Description	Thickness	Set includes
DSCH022-M454	Four piece metric shim set	4.50mm	(1) 2.00mm, (2) 1.00mm, (1) .50mm
DSCH022-M505	Five piece metric shim set	5.00mm	(1) 2.00mm, (2) 1.00mm, (2) .50mm
DSCH022-M506	Six piece metric shim set	5.00mm	(1) 2.00mm, (2) 1.00mm, (1) .50mm, (2) .25mm
DSCH022-M507	Seven piece metric shim set	5.00mm	(1) 2.00mm, (1) 1.00mm, (3) .50mm, (2) .25mm
DSCH022-M605	Five piece metric shim set	6.00mm	(2) 2.00mm, (1) 1.00mm, (2) .50mm
DSCH022-E255	Five piece inch shim set	.250 inch	(3) .062 inch, (2) .031 Inch

**DSCH023 Series - Individual Shims**

DSC Part No.	Description	Thickness	Other part numbers
DSCH023-M025	Metric thickness shim	.25mm	DSC-625S-54
DSCH023-M050	Metric thickness shim	.50mm	DSC-625S-53
DSCH023-M100	Metric thickness shim	1.00mm	DSC-625S-52
DSCH023-M200	Metric thickness shim	2.00mm	DSC-625S-51
DSCH023-E015	Inch thickness shim	.015 inch	125187-54
DSCH023-E032	Inch thickness shim	.031 Inch	125187-52
DSCH023-E062	Inch thickness shim	.062 inch	125187-51

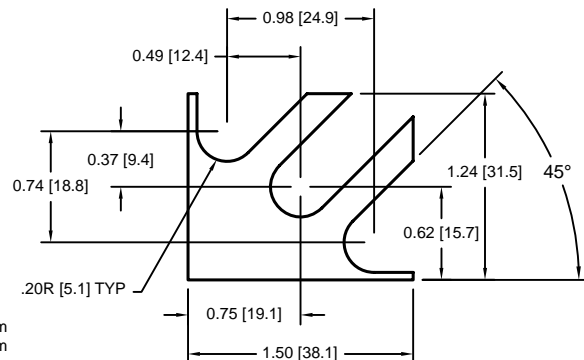


**DSCH023 Series - Shim Sets**

DSC Part No.	Description	Thickness	Set includes
DSCH023-M454	Four piece metric shim set	4.50mm	(1) 2.00mm, (2) 1.00mm, (1) .50mm
DSCH023-M505	Five piece metric shim set	5.00mm	(1) 2.00mm, (2) 1.00mm, (2) .50mm
DSCH023-M506	Six piece metric shim set	5.00mm	(1) 2.00mm, (2) 1.00mm, (1) .50mm, (2) .25mm
DSCH023-M507	Seven piece metric shim set	5.00mm	(1) 2.00mm, (1) 1.00mm, (3) .50mm, (2) .25mm
DSCH023-M605	Five piece metric shim set	6.00mm	(2) 2.00mm, (1) 1.00mm, (2) .50mm
DSCH023-E255	Five piece inch shim set	.250 inch	(3) .062 inch, (2) .031 Inch

**DSCH024 Series - Individual Shims**

DSC Part No.	Description	Thickness	Other part numbers
DSCH024-M025	Metric thickness shim	.25mm	FSD 40800-54
DSCH024-M050	Metric thickness shim	.50mm	FSD 40800-53
DSCH024-M100	Metric thickness shim	1.00mm	FSD 40800-52
DSCH024-M200	Metric thickness shim	2.00mm	FSD 40800-51



**DSCH024 Series - Shim Sets**

DSC Part No.	Description	Thickness	Set includes
DSCH024-M454	Four piece metric shim set	4.50mm	(1) 2.00mm, (2) 1.00mm, (1) .50mm
DSCH024-M505	Five piece metric shim set	5.00mm	(1) 2.00mm, (2) 1.00mm, (2) .50mm
DSCH024-M506	Six piece metric shim set	5.00mm	(1) 2.00mm, (2) 1.00mm, (1) .50mm, (2) .25mm
DSCH024-M507	Seven piece metric shim set	5.00mm	(1) 2.00mm, (1) 1.00mm, (3) .50mm, (2) .25mm
DSCH024-M605	Five piece metric shim set	6.00mm	(2) 2.00mm, (1) 1.00mm, (2) .50mm

Douglas Stamping Company (248) 542-3940 FAX (248) 542-6342

<http://dougstampco.com> [sales@dougstampco.com](mailto:sales@dougstampco.com)